

Status of AU FAUPE activities

The GenomeDK Cluster



CID - GenomeDK accounts

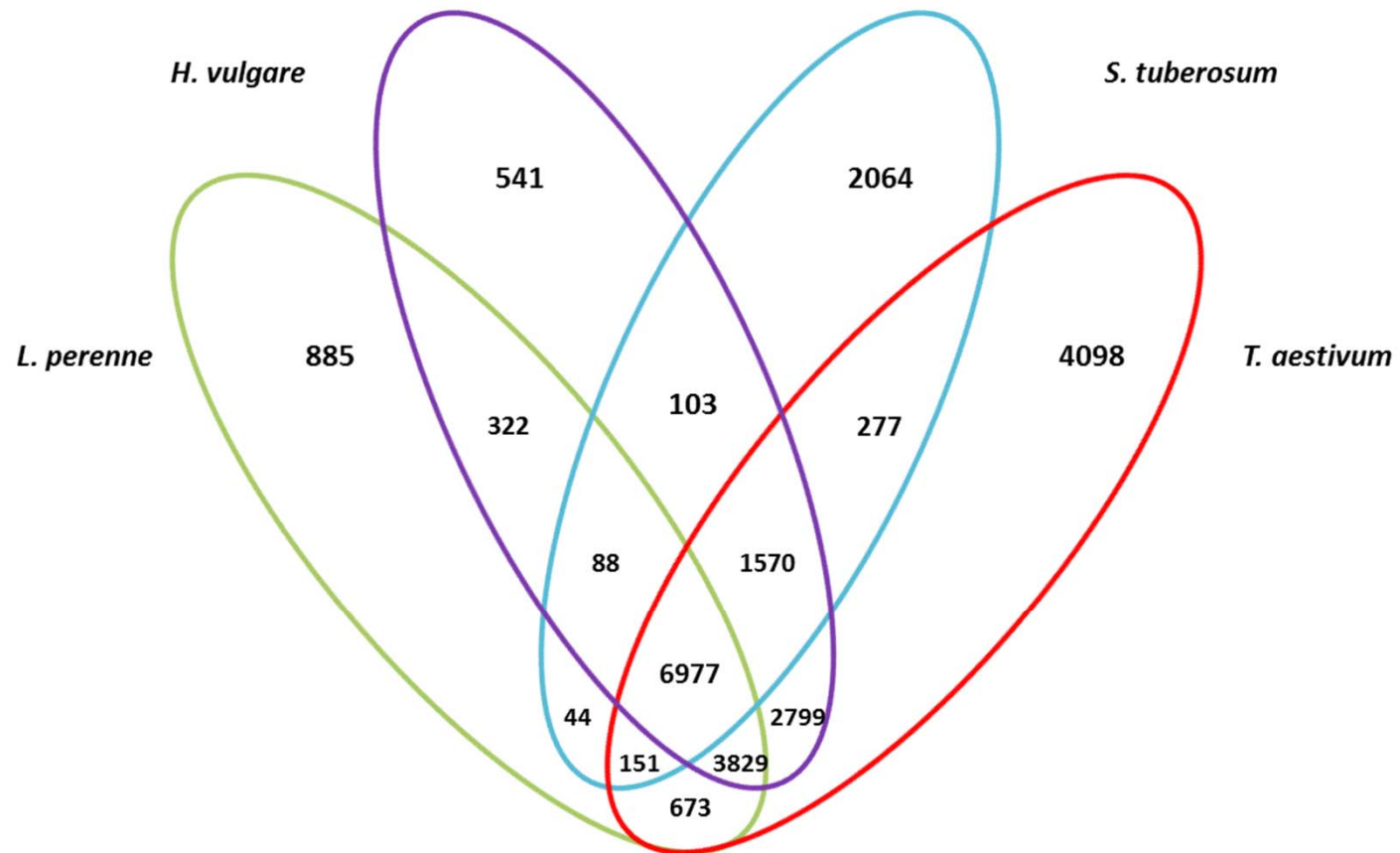
- Nordic Seed: 2 users
- Sejet Plant Breeding: 5 users
- LKF-Vandel: 2 users
- DLF-Trifolium: 5 users
- AU-Foulum: 4 users
- AU-Flakkebjerg: 5 users

GenomeDK Introduction Course

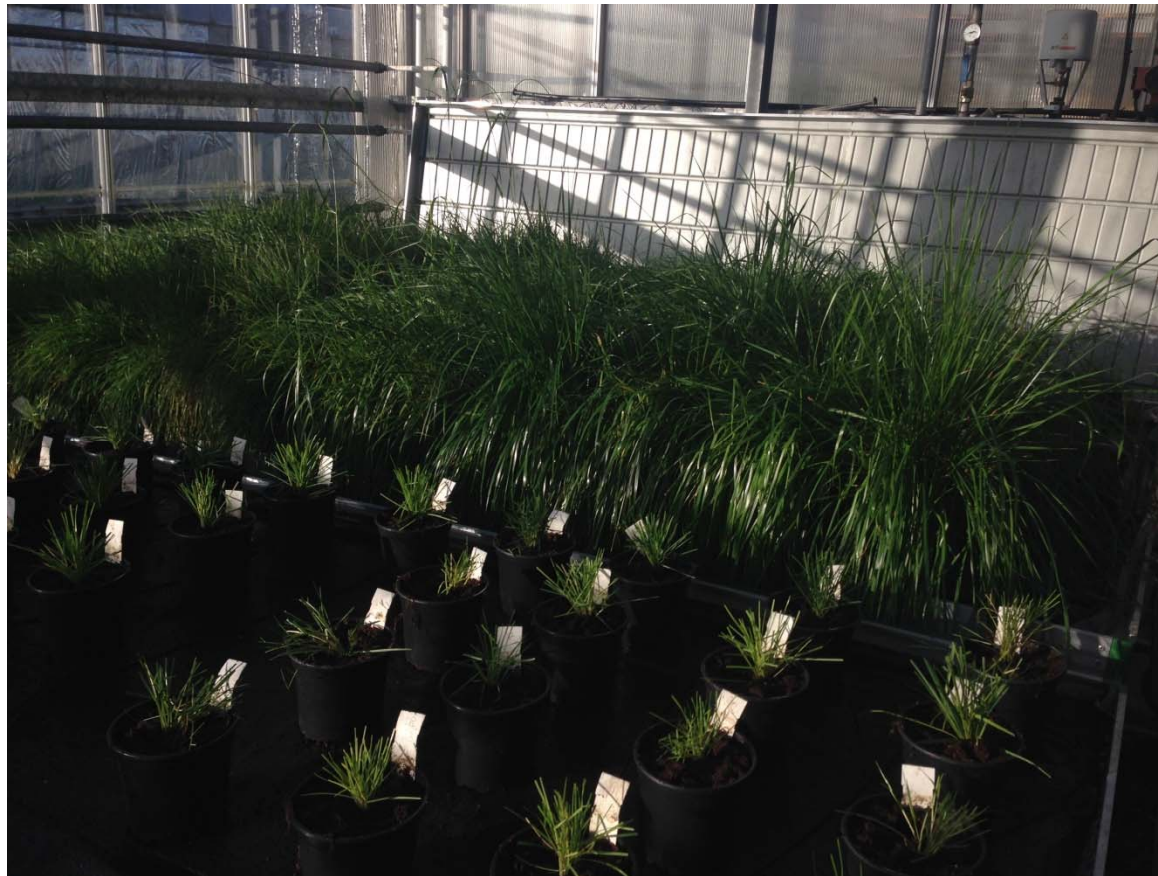
- One day introduction course at AU Research Center Flakkebjerg
- Staff from all four breeding companies participated
- Nordic Seed: 2 users
- Sejet Plant Breeding: 1 user
- LKF-Vandel: 2 users
- DLF-Trifolium: 1 user

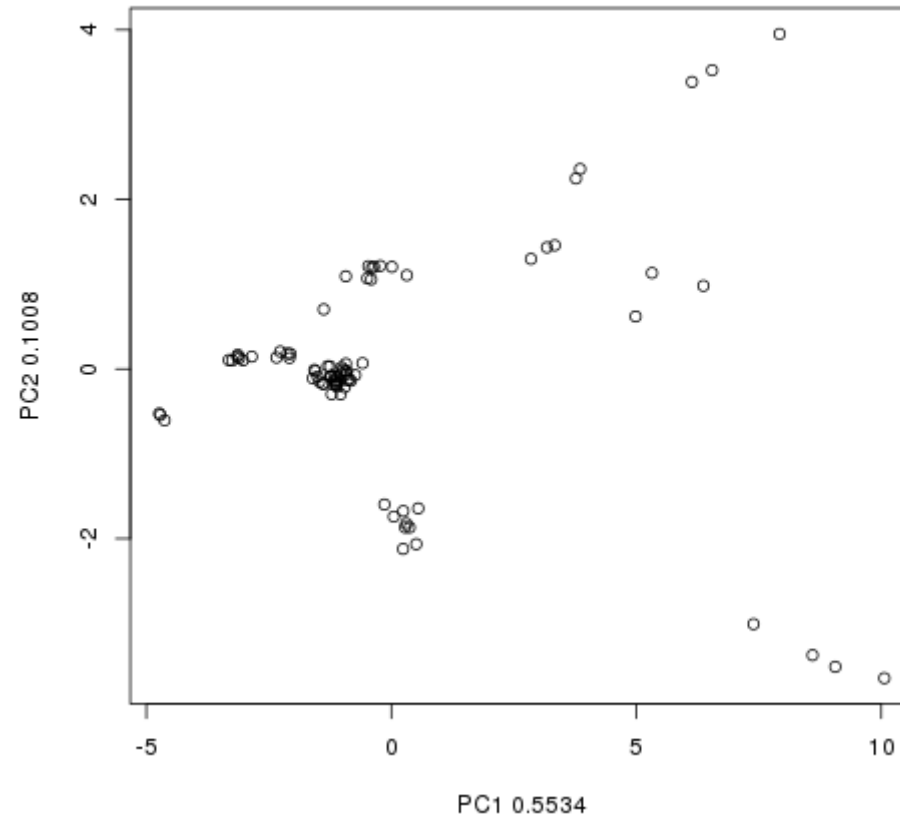
Comparative Genomics - Gene Orthologs

- Transfer of information from one species to another
 - Create a genome-wide link at the gene level across species
 - Candidate genes, or markers, for a trait can be transferred across species
 - QTL
- Prediction across-species for genomic selection; i.e. RadiMax
- Identification of genes unique in a species (rapidly evolving genes)
 - Disease resistance genes
 - Unique genes for a trait of interest in one species; i.e. endophytes in grasses
 - Plant organs; i.e. potato tubers



Lolium Population to Study Root Development





Phenotypic analysis of root population

- Cloning of population this week
- Transfer of plants to KU
- Phenotyping in pipes at KU
- GWAS analysis